

EPSDT & Well-Child Telehealth Guidelines

We have extended telehealth services to include EPSDT and Well-Child care. When possible, an in-person visit continues to be recommended for pediatric preventive care by the American Academy of Pediatrics (AAP), especially for these members who need immunizations. In the event that an in-person visit cannot be completed of telehealth with an in-person visit can be completed.

For additional information and for complete EPSDT Billing Guidelines for in-person services please visit: https://www.highmarkwholecare.com/Portals/0/provider_forms/EPSDTScheduleUpdate.pdf

For all EPSDT claims, the EP modifier must still be placed in the first position.

When completing a Telehealth visit.

For those visits that can be completed through telehealth, it is important to code appropriately in order for the claim to be processed and paid. This requires the correct modifiers and place of service code for telehealth to be added to the claim (See table 1). If completed and coded properly, these visits will pay at the contracted rate.

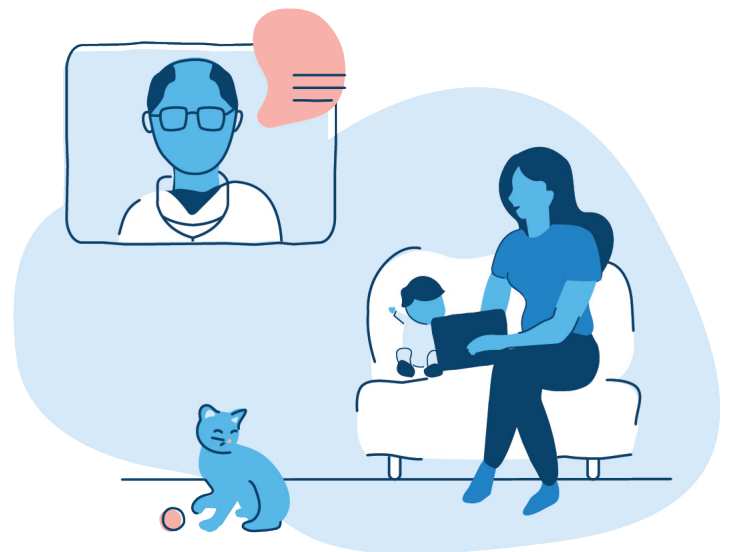


Table 1: Coding for visits where face-to-face components are not required.
Changes are in Blue.

Z Codes/CPT Codes	Place of Service	Modifiers	Payment
Normal EPSDT Coding	02	EP (First position), telehealth modifier (95 or GT)	Normal contracted rates

When completing a split visit.

The EPSDT visit services can be split into a telephonic visit and face-to-face visit if there are components of the visit that require face-to-face, such as hearing and/or vision screening. The telehealth visit should come first and can include services that are appropriate for a telehealth services. If coded appropriately, this visit will pay out at the contracted rate. Use modifier 52 to indicate services that could not be completed via telehealth visit. The face-to-face visit should include proper coding for any services that could not be completed through telehealth. The EP modifier is not required for the second visit.

Table 2: Coding properly for split visits. All changes to coding from normal procedures are marked in Blue font.

Visit	CPT Codes	Z Codes	Modifier(s)	Place of Service	Payment
Telehealth	Normal EPSDT coding	Z00.121 Z00.129	EP, 52, 90 telehealth modifier (95 or GT)	Changed to 02	Normal contracted rates
In-Person	EPSDT services provided during visit	Z00.121 Z00.129	EPSDT Modifier(s) as appropriate, i.e. U1	Normal coding	Full EPSDT rate provided for initial EPSDT visit

For additional information on the American Academy of Pediatrics (AAP) recommendations please visit: <https://services.aap.org/en/pages/2019-novel-cornavirus-covid-19-infections/clinical-guidance/guidance-on-the-necessary-use-of-telehealth-during-the-covid-19-pandemic/>

For additional information on the Department of Human Services (DHS) recommendations please visit: https://www.media.pa.gov/Pages/DHS_details.aspx?newsid=501

Health benefits or health benefit administration may be provided by or through Highmark Wholecare, coverage by Gateway Health Plan, an independent licensee of the Blue Cross Blue Shield Association (“Highmark Wholecare”).